



Specification

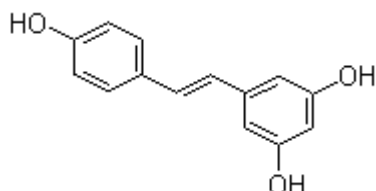
21.10.2015

Code No: NN04178

CLP No: WL511399-15

CAS No: 501-36-0

EINECS No.: -

Chemical Name: **Resveratrol****Structure:**Molecular Formula: $C_{14}H_{12}O_3$
Molecular Weight: 228.24**Product Properties:**

Appearance	White Fine Crystalline Powder
Nature	From Root of Giant Knotweed
Odor	Characteristic
Taste	Characteristic
Origin	Rhizoma Polygoni Cuspidati
Trans-Resveratrol	98 % min.
Loss on drying	5 % max.
Ashes	5 % max.
Bulk density	25 - 45g/ 100 ml
Particle size	100 % trough mesh 80
Heavy metals	10 ppm max.
Lead (Pb)	1 ppm max.
Arsenic (As)	2 ppm max.
Cadmium (Cd)	1 ppm max.
Mercury (Hg)	0.5 ppm max.
T. Sulphites	20 ppb max.
Aflatoxins B2	4 ppb max.
Pesticides residue	Complies
Total plate count	10000 cfu/g max.



Yeast & Moulds	1000 cfu/g max.
E.coli	Negative
Salmonella	Negative
Staphylococcus aureus	Negative
Enterobacterias	100 cfu/g max.
GMO Status	Non-GMO
Irradiation	Irradiation Free

Storage: Store in a well-closed container away from moisture.

Shelf Life: 3 years if sealed and store away from direct sun light.
